

Anti-H_TNFRSF8(CD30) hIgG1 Antibody (Brentuximab)

产品信息

GM-28856AB-10	10 µg
GM-28856AB-100	100 µg
GM-28856AB-1000	1 mg

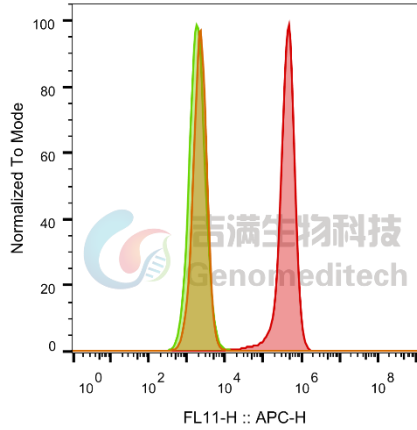
抗体信息

Species Reactivity	Human
Clone	Brentuximab
Source/Isotype	Monoclonal human IgG1, κ
Application	Flow cytometry
Specificity	Detects TNFRSF8.
Gene	TNFRSF8(CD30)
Other Names	CD30; Ki-1; D1S166EC
Gene ID	P28908-1
Background	The protein encoded by this gene is a member of the TNF-receptor superfamily. This receptor is expressed by activated, but not by resting, T and B cells. TRAF2 and TRAF5 can interact with this receptor, and mediate the signal transduction that leads to the activation of NF-kappaB. This receptor is a positive regulator of apoptosis, and also has been shown to limit the proliferative potential of autoreactive CD8 effector T cells and protect the body against autoimmunity.
Storage	Store at 2-8°C short term (1-2 weeks).Store at ≤ -20°C long term.Avoid repeated freeze-thaw.
Formulation	Phosphate-buffered solution, pH 7.2.

Data Examples

Flow cytometry

The recommended usage range is 0.5-4 μg per test. H_TNFRSF8(CD30) CHO-K1 Cell Line (Catalog # GM-C19027) was stained with Anti-H_TNFRSF8(CD30) hIgG1 Antibody (Catalog # GM-28856AB) or isotype control antibody, followed by anti-Human IgG APC-conjugated Secondary Antibody.



SampleID	Geometric Mean : FL11-H
CHO-K1 anti-TNFRSF8+APC-2nd Ab	2233
CHO-K1 H_TNFRSF8(CD30) H_IgG+APC-2nd Ab	1925
CHO-K1 H_TNFRSF8(CD30) anti-TNFRSF8+APC-2nd Ab	392056

Genomeditech

Flow cytometry

The recommended usage range is 0.5-4 μ g per test. Cynomolgus_DR5 CHO-K1 Cell Line (Catalog # GM-C26016) was stained with Anti-H_TNFRSF10B(DR5) hIgG1 Antibody (Catalog # GM-28856AB) or isotype control antibody, followed by anti-Human IgG APC-conjugated Secondary Antibody.

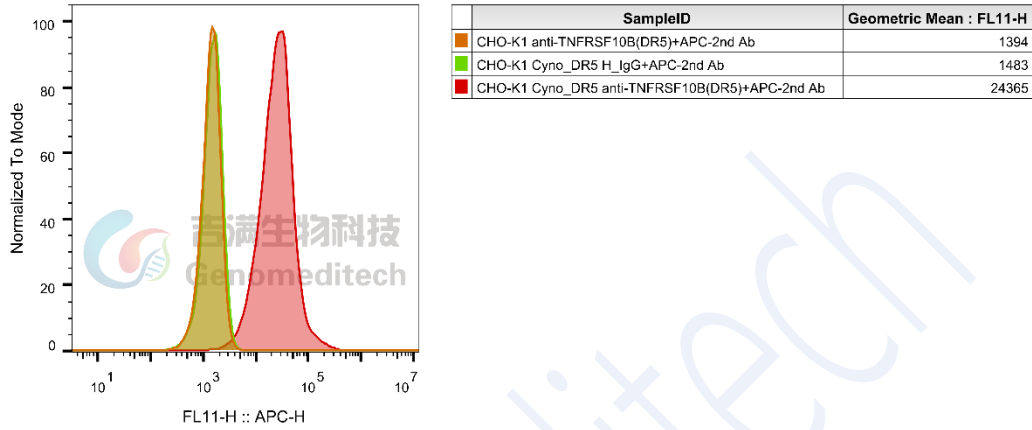


Fig. FACS